

EEI

EEI IMAGING

EEI Imaging exists to provide our customers with the current structure, format, and conditions of indoor and outdoor environments such as communications towers, electrical stations, industrial plants, infrastructure, construction sites, and much more. We use state of the art sensors and technology to provide images, video, and digital data of areas of interest. The data collected provides customers with a one stop, no return solution reducing inspection time and increasing return.



High Definition Laser Scanning

- Up to 400 Feet scanning range
- HDR Imaging
- Field of view 360° Horizontal and 270° Vertical
- Point Accuracy at 50m (162ft) = +/- 1.5mm (0.062")

Aerial Inspections

- Independent Camera Stabilization
- Pictures
- Full Frame Sensor
- 5760x3240 22.1mp
- Image format RAW or JPEG
- Video
- 1920x1080, 25fps or 1280x720, 60fps
- Video format MOV or MPEG-4

Aerial Mapping

- Georeferenced Orthomosaics
- 3D Point Clouds and Digital Surface Models (DSMs)
- Volume Measurements
- Ideal surveys are 1-100 acres
- Typical Point Accuracy is 4-8cm Horizontal and 4-12cm Vertical

(800) 291-6658

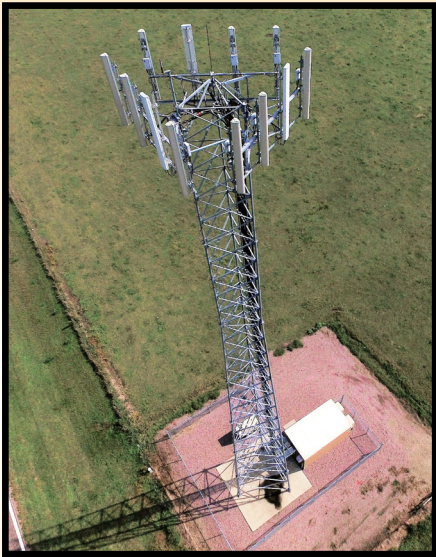
www.EhresmannEngineering.com

EEI Imaging is compliant and legal to operate UAVs in the United States. Our Section 333 Exemption number is 13039.

EI

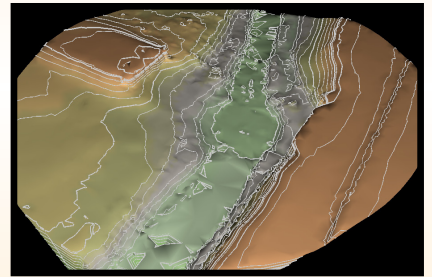
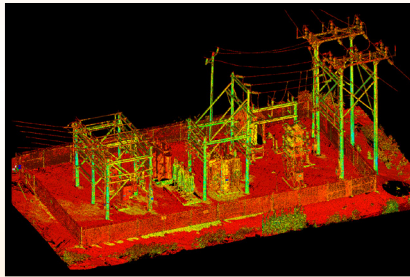
EEI IMAGING

EEI Imaging exists to provide our customers with the current structure, format, and conditions of indoor and outdoor environments such as communications towers, electrical stations, industrial plants, infrastructure, construction sites, and much more. We use state of the art sensors and technology to provide images, video, and digital data of areas of interest. The data collected provides customers with a one stop, no return solution reducing inspection time and increasing return.



Industries Served

Communications	Alternative Energy
Mining	Land Development
Civil	Power
Construction	Industrial
Transportation	Architecture



EEI Imaging offers multiple ways to store and host client data at no cost to you. Needmore Reports is our free report portal for detailed inspection reports, site tracking, and non-conformance notification. EEI Imaging also hosts scan projects on our TruView server. This is a web-based portal that allows users to see scan data and images of their project site. It also allows basic measurement, markup, and file linking.

Emergency Situations: storm damage site analysis and structural mapping is our specialty. We can assess, document, and accurately map and model most structures without hindering the safety of our inspectors or your structure.

Let Ehresmann Engineering, Inc. be your only supplier for all your communications needs. We offer tower structural analysis, project management, and tower manufacturing. Needmore Towers and EEI Imaging can provide site installations, mappings, audits, and inspections.

(800) 291-6658

www.EhresmannEngineering.com

EEI Imaging is compliant and legal to operate UAVs in the United States. Our Section 333 Exemption number is 13039.